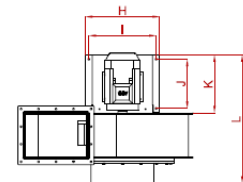
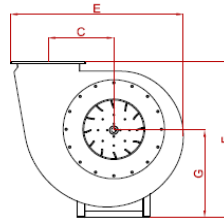
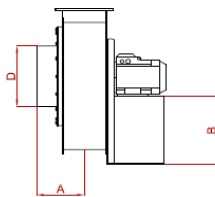
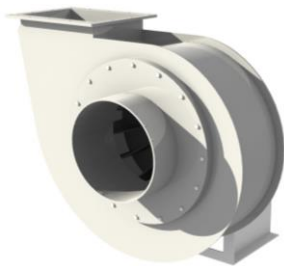
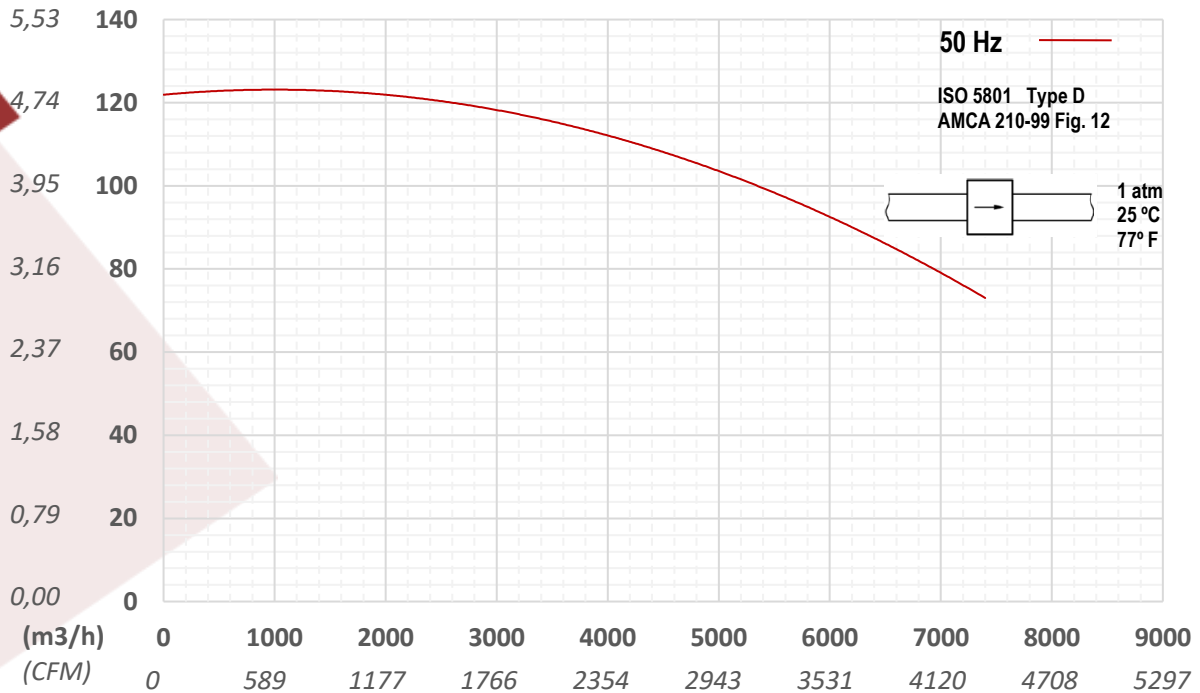


M-355 1500 Three Phase

STATIC PRESSURE

(inch.c.w.) (mm.c.a.)



FLOW RATE

CONFIGURATION DATA

3-Phase
50 Hz

Max. Flow Rate	m3/h	7400
Max. Static Pressure	mmca	124
Drive Type		DOL
Casing Material		PP-H
Impeller Material		PP-H
Noise pressure (1,5m)	dB(A)	91
Weight	Kg	65

MOTOR

3-Phase
50 Hz

Frame Size		112
Mountings		B3
Speed	rpm	1400
Power	kW	4
Weight	Kg	33,9
Voltage	V	230-400
Safety Class		IP55

Octave Band Sound Power Level dB(A)

		63	125	250	500	1000	2000	4000	8000	LWA
ASPIRATION	A	66	72	82	87	88	80	74	68	92
	B	78	78	80	83	88	81	73	65	91
DISCHARGE	A	80	87	90	90	91	85	74	68	96
	B	75	78	82	94	87	81	69	63	90

Dimensions

	A	B	C	D	E	F	G	H	I	J	K	L
mm	270	400	375	355	988	912	512	420	380	280	330	730
inch	10,6	15,7	14,7	14,0	38,8	35,8	20,1	17	14,9	11,0	13,0	28,7