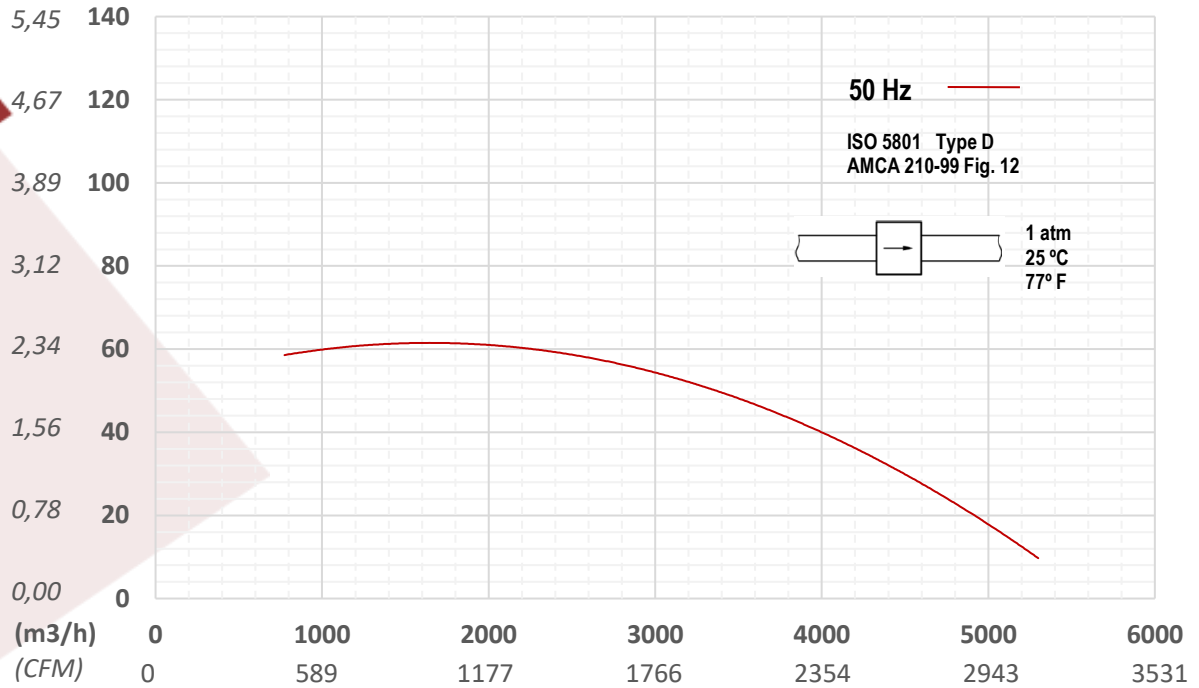


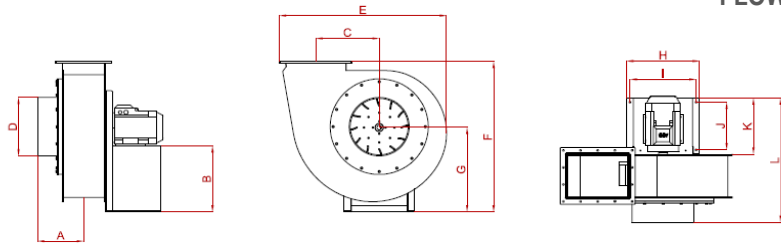
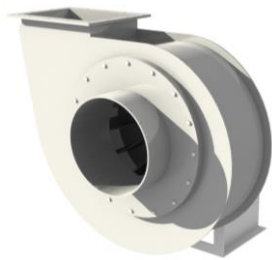
M-355 1000 Three Phase

STATIC PRESSURE

(inch.c.w.) (mm.c.a.)



FLOW RATE



CONFIGURATION DATA

3-Phase
50 Hz

Max. Flow Rate	m ³ /h	5100
Max. Static Pressure	mmca	60
Drive Type		DOL
Casing Material		PP-H
Impeller Material		PP-H
Noise pressure (1,5m)	dB(A)	81
Weight	Kg	65

MOTOR

3-Phase
50 Hz

Frame Size		112
Mountings		B3
Speed	rpm	950
Power	kW	2,2
Weight	Kg	27,1
Voltage	V	230-400
Safety Class		IP55

Octave Band Sound Power Level dB(A)

		63	125	250	500	1000	2000	4000	8000	LWA
ASPIRATION	A	55	60	68	73	73	67	62	57	77
	B	65	65	67	69	73	68	61	54	76
DISCHARGE	A	67	73	75	75	76	71	62	57	80
	B	63	65	68	78	73	68	58	53	75

Dimensions

	A	B	C	D	E	F	G	H	I	J	K	L
mm	270	400	375	355	988	912	512	420	380	280	330	730
inch	10,6	15,7	14,7	14	38,8	35,8	20,1	17	14,9	11,0	13,0	28,7