

# M-250 3000 Three Phase

## STATIC PRESSURE

(inch.c.w.) (mm.c.a.)

11,81 300

9,85 250

7,88 200

5,91 150

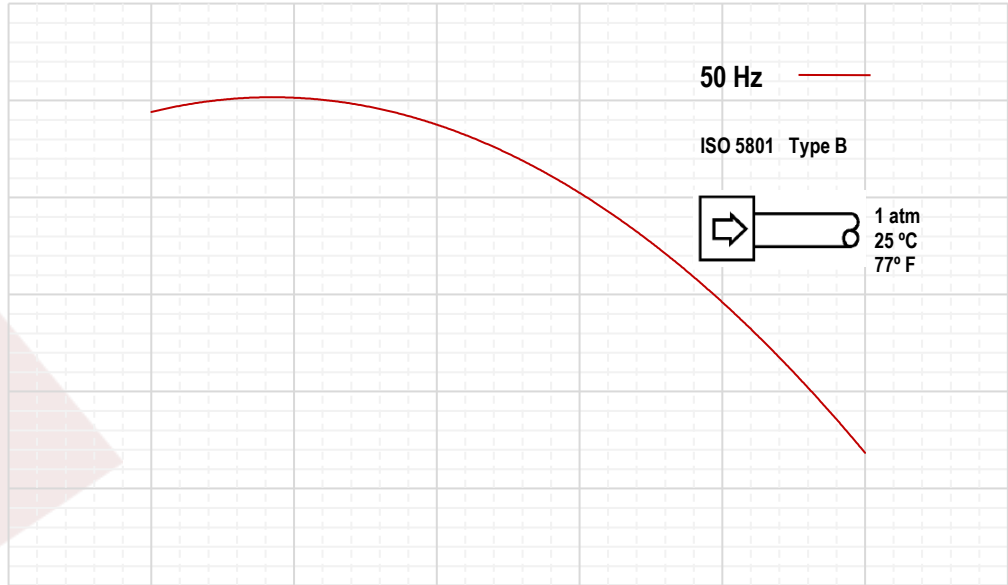
3,94 100

1,97 50

0,00 0

(m3/h)

(CFM)



0

1000

2000

3000

4000

5000

6000

7000

0

589

1177

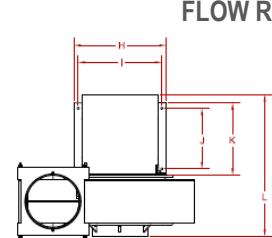
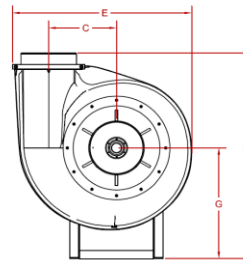
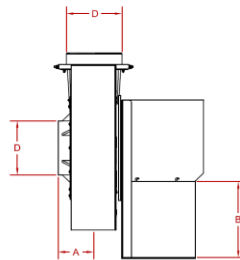
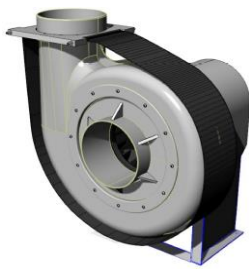
1766

2354

2943

3531

4120



## FLOW RATE

### CONFIGURATION DATA

3-Phase  
50 Hz

Max.Flow Rate	m3/h	6000
Max. Static Pressure	mmca	250
Drive Type		DOL
Casing Material		PP-H
Impeller Material		PP
Noise pressure (1,5m)	dB(A)	95
Weight	Kg	55

### MOTOR

3-Phase  
50 Hz

Frame Size		112
Mountings		B3
Speed	rpm	2800
Power	kW	5,5
Weight	Kg	35,7
Voltage	V	230-400
Safety Class		IP55

### Dimensions

	A	B	C	D	E	F	G	H	I	J	K	L
mm	202	375	302	250	805	950	511	420	380	280	333	652
inch	7,9	14,7	11,9	9,8	31,6	37,3	20,1	17	14,9	11,0	13,1	25,6