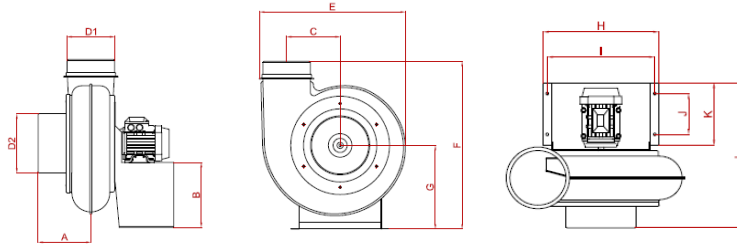
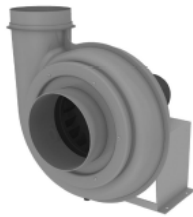
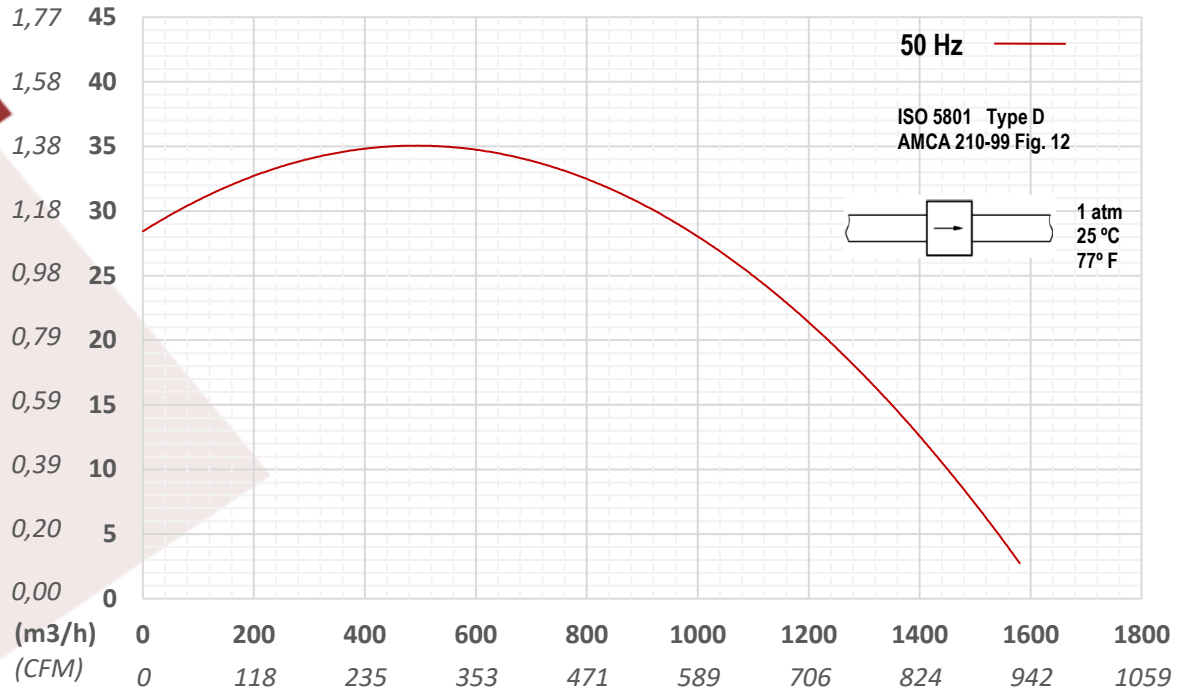


M-200VG 1000 Three Phase

STATIC PRESSURE

(inch.c.w.) (mm.c.a.)



FLOW RATE

CONFIGURATION DATA

3-Phase
50 Hz

Max. Flow Rate	m ³ /h	1580
Max. Static Pressure	mmca	35
Drive Type		DOL
Casing Material		PP-H
Impeller Material		PPs-EL
Noise pressure (1,5m)	dB(A)	72
Weight	Kg	21

MOTOR

3-Phase
50 Hz

Frame Size		80
Mountings		B3
Speed	rpm	950
Power	kW	0,37
Weight	Kg	8,25
Voltage	V	230-400
Safety Class		IP55

Octave Band Sound Power Level dB(A)

		63	125	250	500	1000	2000	4000	8000	LWA
ASPIRATION	A	20	40	51	54	53	53	50	44	62
	B	12	25	41	49	51	51	47	35	57
DISCHARGE	A	17	38	51	56	58	58	54	41	64
	B	11	23	39	48	51	50	49	29	56

Dimensions

	A	B	C	D1	D2	E	F	G	H	I	J	K	L
mm	223	275	226	200	250	619	711	355	415	385	155	320	534
inch	8,8	10,8	8,9	7,9	9,8	24,3	27,9	14	16,3	15,1	6,1	12,6	21